

SMALL WHITE *Pieris rapae* (ABH 58.007)

Like the Large White this is a garden pest of cabbages. However, it is usually much less common in our region, being seldom seen in the Northern Isles, Western Isles and the far north of mainland Highland, or in areas away from habitation. Numbers are variable from year to year, being reinforced sporadically by migration.

Distribution trend. There has been little change in distribution since the previous atlas (2007).

Habitat. Usually quite closely restricted to gardens and cultivated crops.

Flight period. Early April to late June and again late June to end of September.

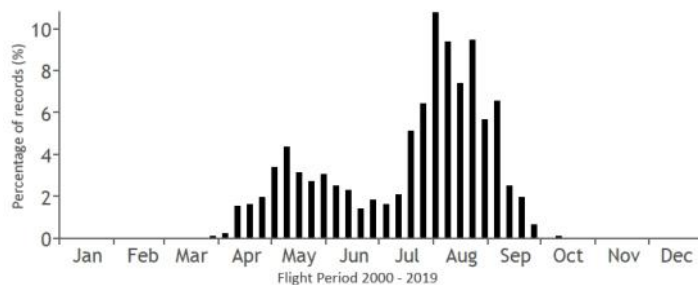
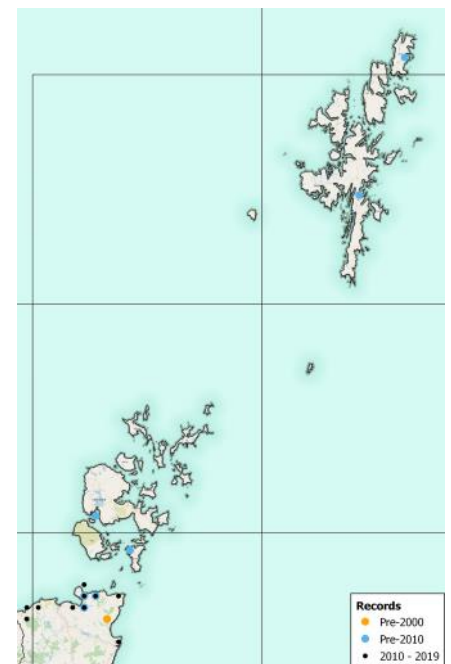
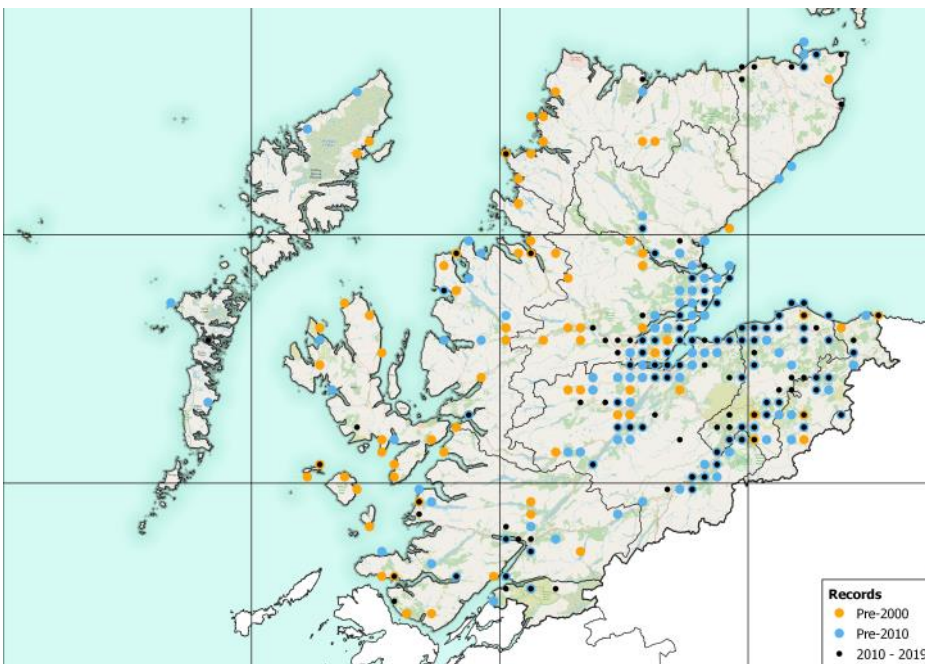
Larval food plants. Cabbage *Brassica oleracea* and other cultivated crucifer varieties. Nasturtium *Tropaeolum majus* and Aubrieta (often misspelled as Aubretia) are also used in gardens.



Jim Black

Appearance and behaviour. This can be distinguished from the Large White, other than by size, by the black tip on the forewing, which extends part way along the leading edge of the wing but not far down the outer edge. It is possible that a proportion of our records for 'Small White' are actually misidentifications of one of the other *Pieris* species, so recorders are especially asked to look closely and make sure when identifying this butterfly.

The green caterpillar on cabbages is a little less familiar to us than the conspicuous larvae of the Large White.



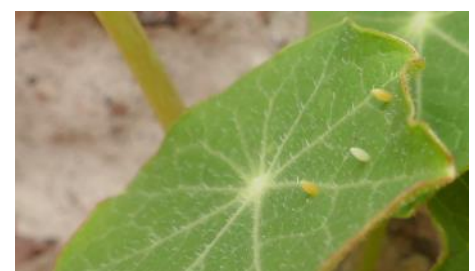
Number of Records	
Pre-2000	354
2000 - 2009	484
2010 - 2019	495



Larva on Aubrieta - Hilary Swift



Pupa - Michael Taylor



Eggs on Nasturtium - Hilary Swift