

PEARL-BORDERED FRITILLARY *Boloria euphrosyne* (ABH 59.014) UK BAP: Priority Species

One of the UK's most threatened species, the Pearl-bordered Fritillary is locally distributed over quite a large part of our region. It is much less common and widespread than the Small Pearl-bordered Fritillary, being absent from most of the coastal districts, from the far north and from all the islands.

Distribution trend. It was declining at the time of the last atlas in 2007 and continues to decline to this day.

Habitat. Open areas in woodlands, especially where there is a base-rich soil and abundance of violets – bracken is nearly always present too. Sometimes also sheltered areas on moorland.

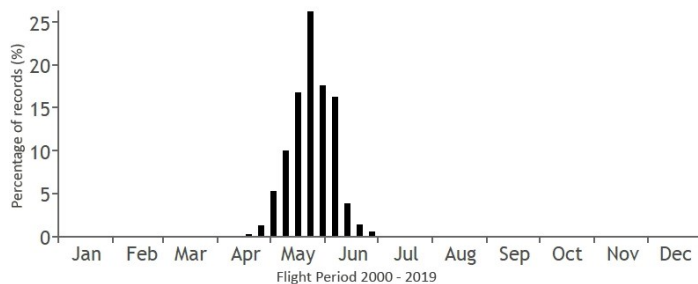
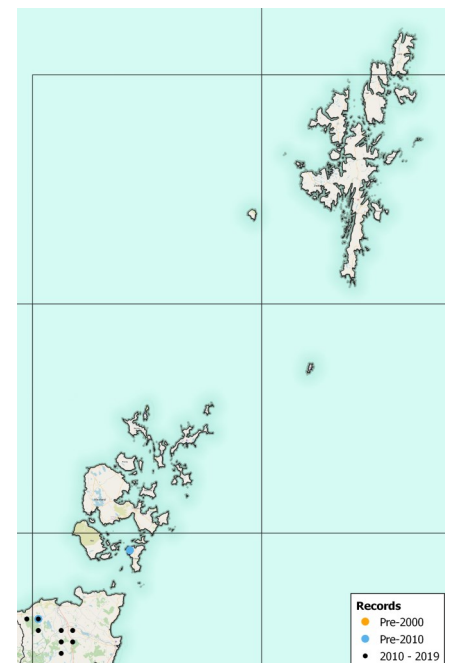
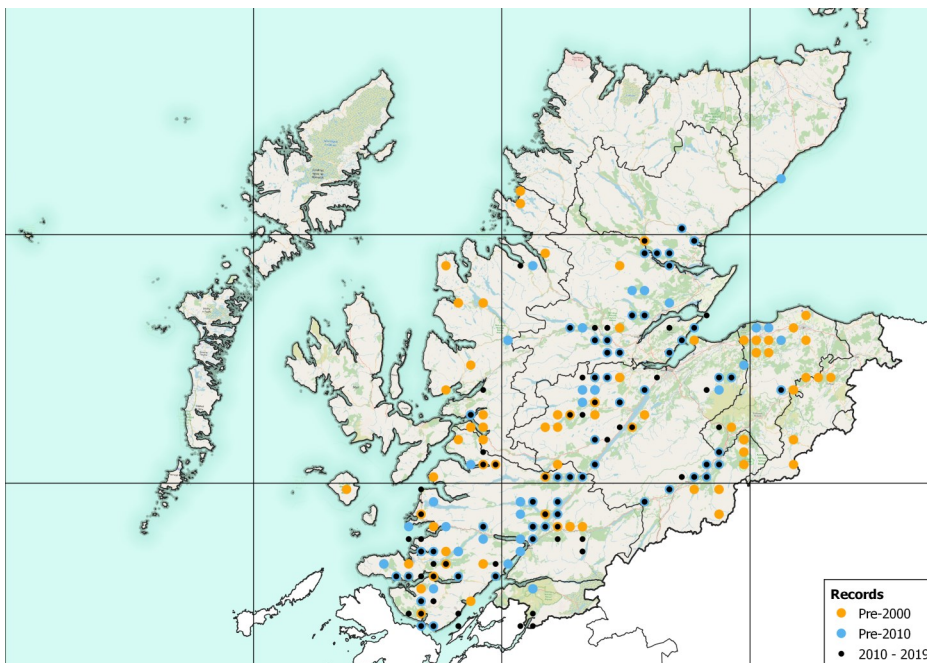
Flight period. Mid-April to end of June.

Larval food plant. Common Dog Violet *Viola riviniana*.

Appearance and behaviour. This species is very difficult to distinguish in flight from the Small Pearl-bordered Fritillary and,



Nigel Richards



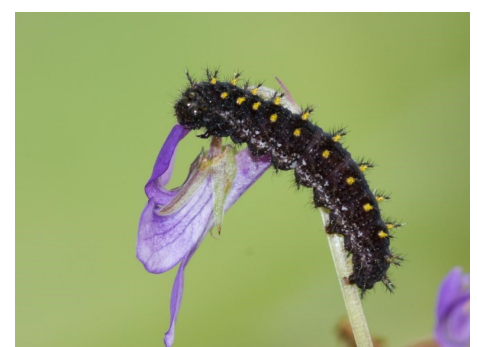
| Number of Records | |
|-------------------|-----|
| Pre-2000 | 517 |
| 2000 - 2009 | 490 |
| 2010 - 2019 | 548 |



Nigel Richards



Peter Eeles



Peter Eeles