

SMALL PEARL-BORDERED FRITILLARY *Boloria selene* (ABH 59.015) UK BAP: Priority Species

This attractive butterfly, now severely threatened in parts of southern Britain, is widespread over a large part of our area. The apparent density of the distribution map does not mean it occurs everywhere as it is colonial and confined to particular habitat types.

Distribution trend. Despite concern for this species in the UK generally, there is no significant decrease in this species' distribution here. There are a number of squares showing only old records, suggesting a decrease, however, there are also a number of recent records from new locations such as Caithness. There may be a small net loss overall. It remains absent from the Western and Northern Isles, except for one pre-2010 record from Orkney.

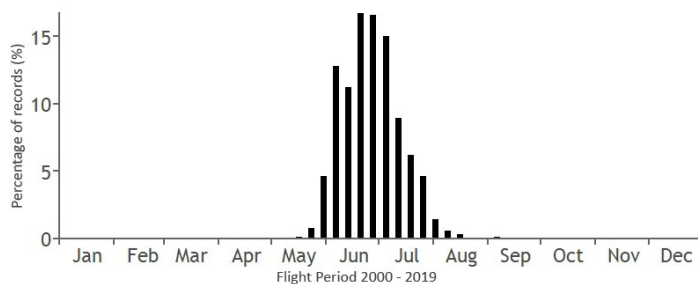
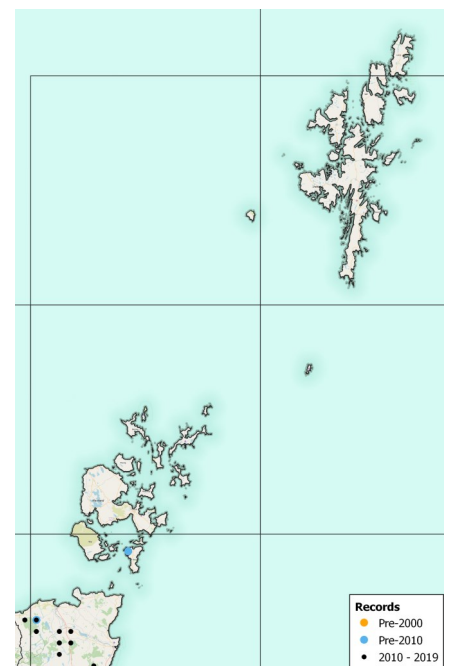
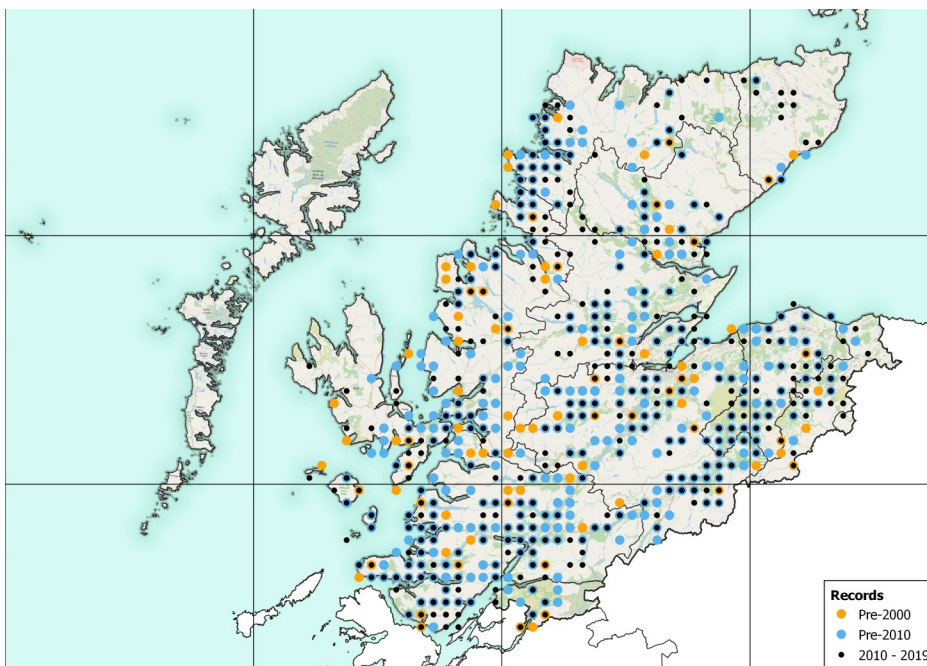


Nigel Richards

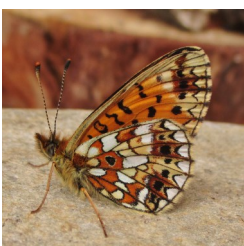
Habitat. Mainly in damp grassland areas, quite extensively in the west but more locally in the east.

Flight period. Mid-May to mid-August. Following the extended summer of 2021, a second brood was recorded in September. This may become a more common occurrence with climate change.

Larval food plant. Common Dog-violet *Viola riviniana* and Marsh Violet *Viola palustris*.



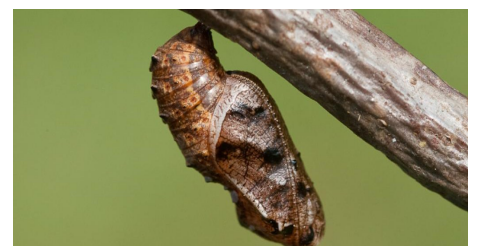
Number of Records	
Pre-2000	1231
2000 - 2009	2267
2010 - 2019	1699



Nigel Richards



Peter Eeles



Peter Eeles