

COMMA *Polygonia c-album* (ABH 59.031)

There was no distribution map in the 2007 atlas for this species, because at that time there were only two known records (2004 & 2006).

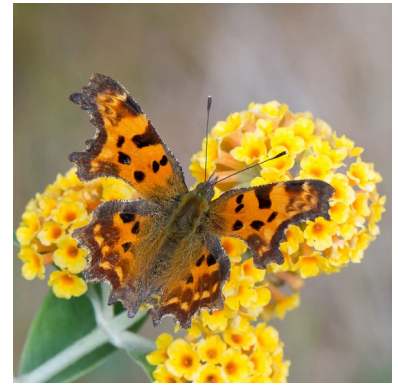
Distribution trend. Following those early records and up to 2018, there were up to five records a year, but some years had no records at all. During this time, colonisation of the Highlands was predicted, as this species was rapidly expanding its U.K. distribution northwards. Then, in 2019, there were a record number of sightings totalling 25. It is expected that this species will become established in Highland and continue its northward expansion.

Habitat. Primarily a woodland species but can be seen in other habitats such as gardens, especially in late summer and autumn prior to hibernation.

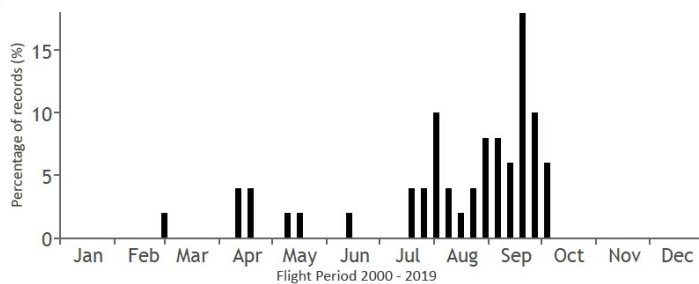
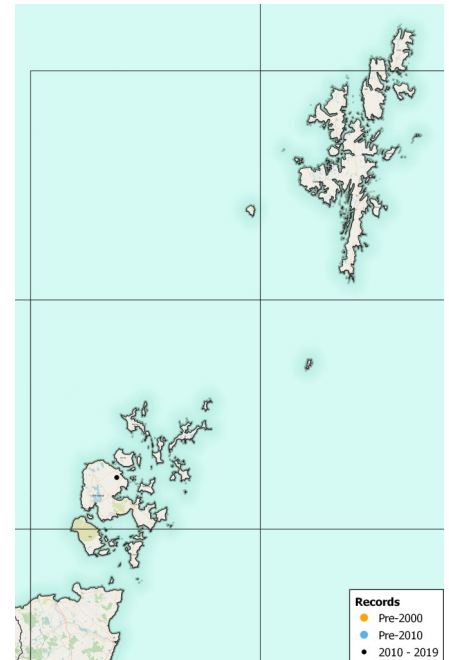
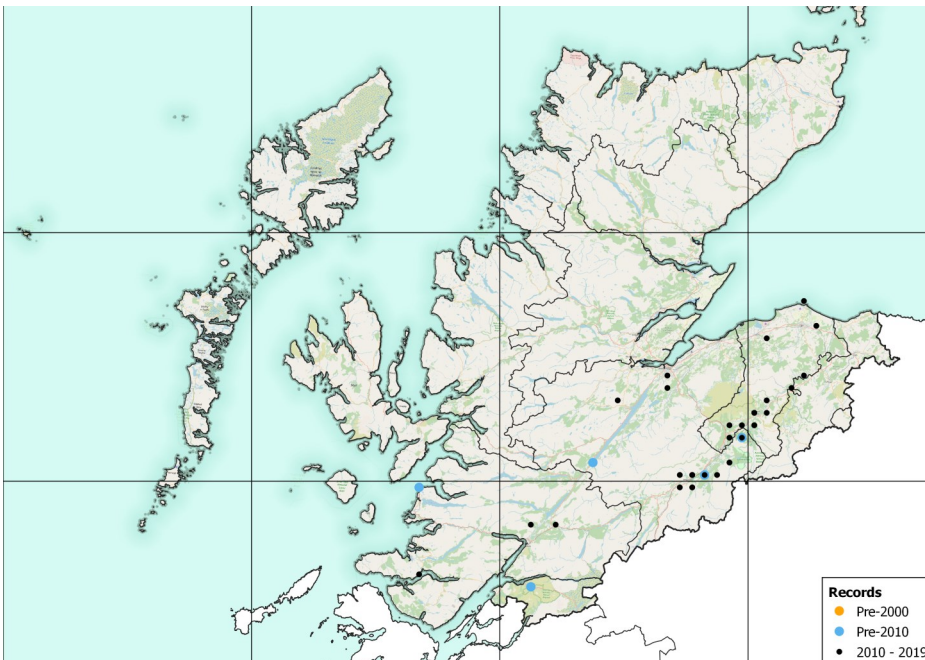
Flight period. Most records are from mid-July to early October, but over-wintering individuals have been recorded as early as February.

Larval food plant. At present there is no proof of breeding in Highland, but further south Common Nettle is the primary foodplant.

Appearance and behaviour. This butterfly is unmistakable with its scalloped wing edges and bright orange colouring. It is so named because of a white comma mark on the hindwing underside.



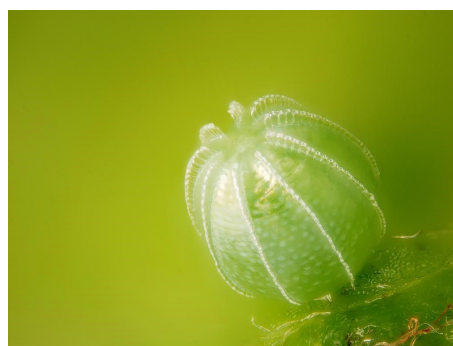
Michael Taylor



Number of Records	
Pre-2000	0
2000 - 2009	5
2010 - 2019	45



Alison Ritchie



Gilles San Martin



Paul Davis