

SMALL COPPER *Lycaena phlaeas* (ABH 61.001)

A butterfly predominantly of the eastern side of our region, where it is widespread though avoiding the highest areas. Seldom is it seen in any great numbers at a time. In the west it occurs rarely, but the few records we have suggest persisting colonies rather than vagrants. Absent from the Western Isles, Fair Isle and Shetland.

Distribution trend. No significant change since the 2007 atlas, except for a small increase in Caithness, and an absence of records from Orkney in the last decade.

Habitat. A wide variety of open habitat types including rough grassland, farmland and coastal dunes.

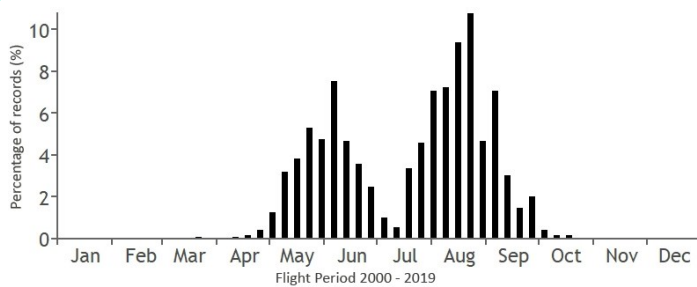
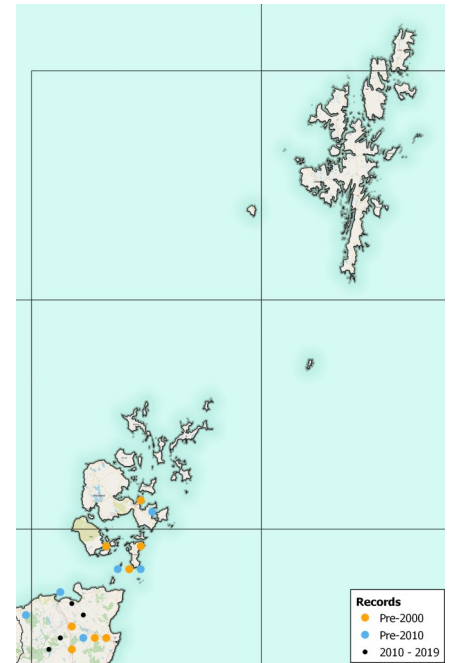
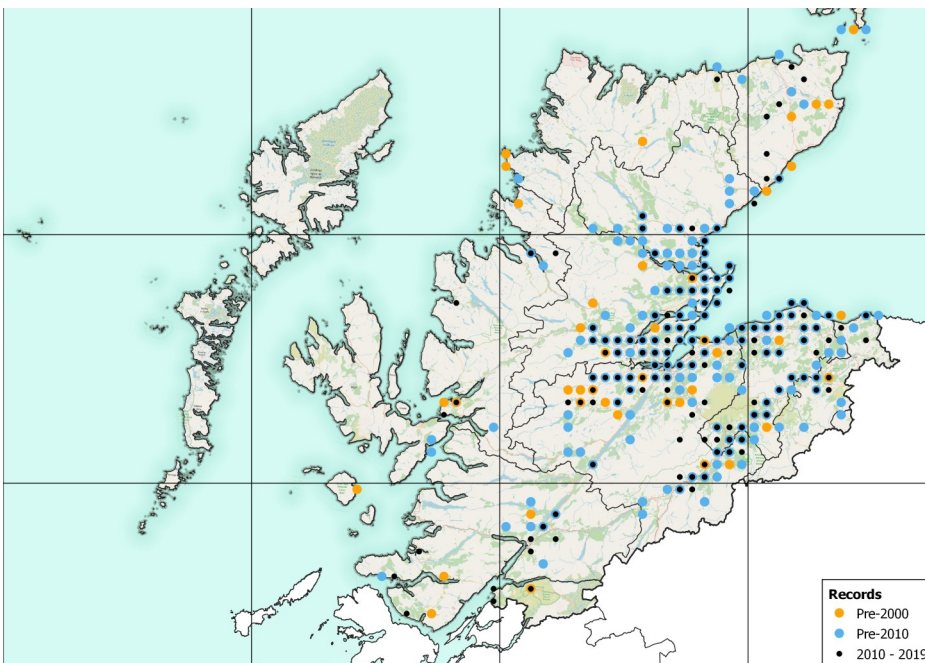
Flight period. Two broods each year, from mid-April to mid-July and again mid-July to mid-October.

Larval food plants. Sorrels *Rumex acetosa* and *R. acetosella*.

Appearance and behaviour. Seen close up this is an unmistakable butterfly. However, its flight is rapid and erratic, and it can



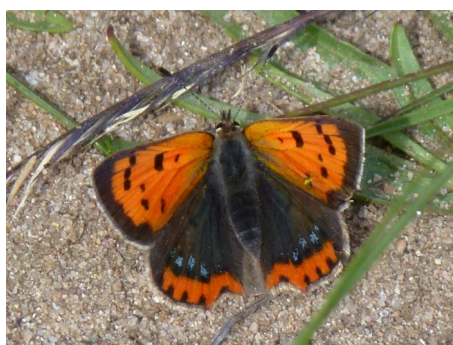
Michael Taylor



Number of Records	
Pre-2000	338
2000 - 2009	664
2010 - 2019	704



Catriona Matheson



Caeruleopunctata form - Audrey Turner



Gilles San Martin