

NORTHERN BROWN ARGUS *Aricia artaxerxes* (ABH 61.016) UK BAP: Priority Species

This is a species restricted to eastern mainland. The colonies are often quite small and are localised by the occurrence of the larval food plant, Common Rock-rose.

Distribution trend. Although the general distribution is very similar to that of the 2007 atlas, there appears to have been a net loss of colonies in recent years.

Habitat. Base-rich grassland, often on slopes with a strong southerly exposure.

Flight period. Early June to late August.

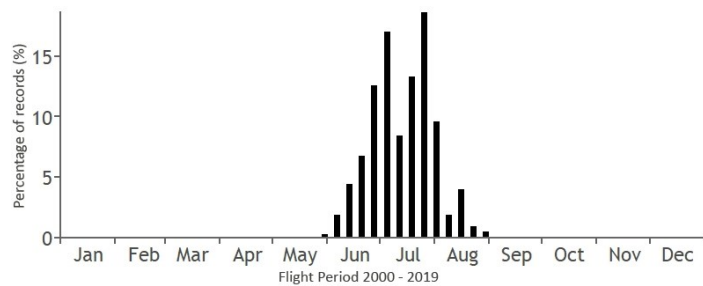
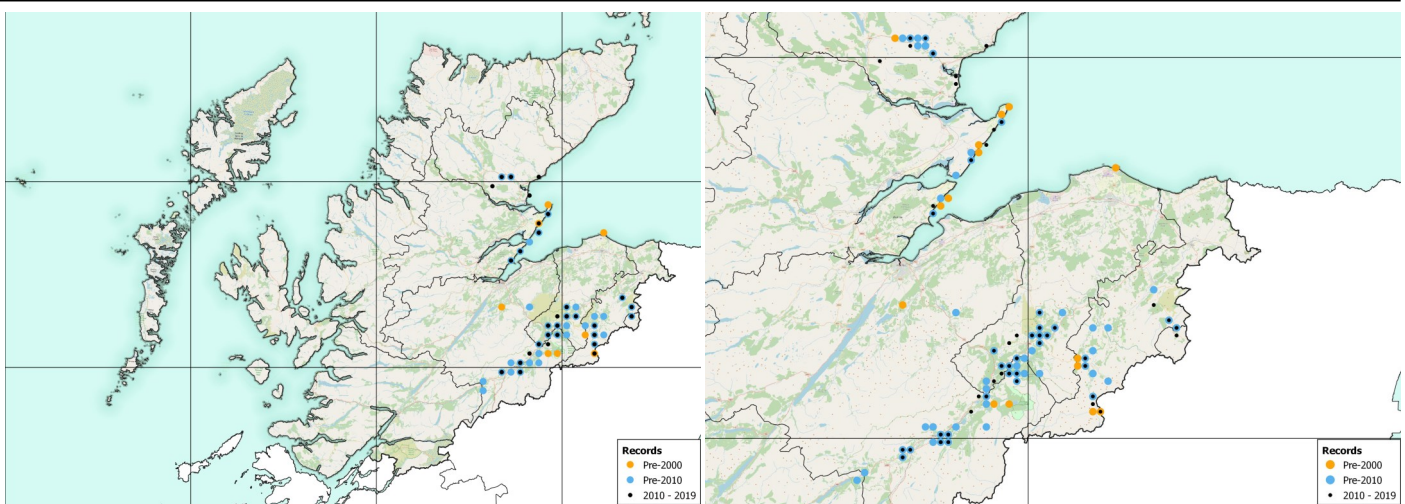
Larval food plant Common Rock-rose *Helianthemum nummularium*.

Appearance and behaviour. Resembling a smaller Common Blue, although it has blackish (not really 'brown') upper sides and a distinctive white spot in the middle of each forewing. The underside white spots, which are black-pupiled in Common Blue, are clear in this species (see Plate 2).



Jim Black

Left, map at 5KM square resolution, right, map at 2KM square resolution. There are no records from the Northern Isles.



Number of Records	
Pre-2000	127
2000 - 2009	177
2010 - 2019	321



Jack Harrison



Eggs on Common Rock-rose - Hilary Swift



Peter Eeles