

COMMON BLUE *Polyommatus icarus* (ABH 61.018)

A familiar and attractive butterfly of high summer, this species is very widely distributed, but seldom seen in very large numbers in one place.

Distribution trend. This species continues to be widespread across mainland Highland, Western Isles and Orkney. There are however, no recent (post-2000) records for Fair Isle or Shetland.

Habitat. Grassy sites, from sea level to high in the mountains, where Bird's-foot Trefoil is established.

Flight period. Late May to late August. Some fresh specimens appearing in September may represent an occasional second generation.

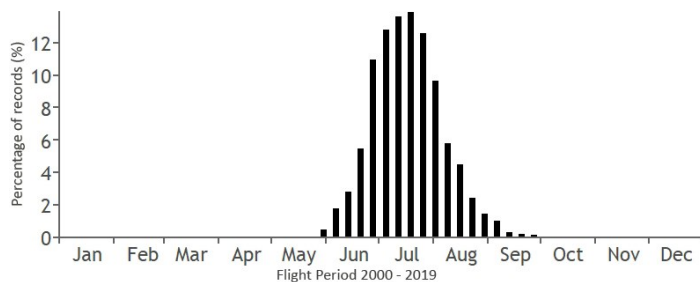
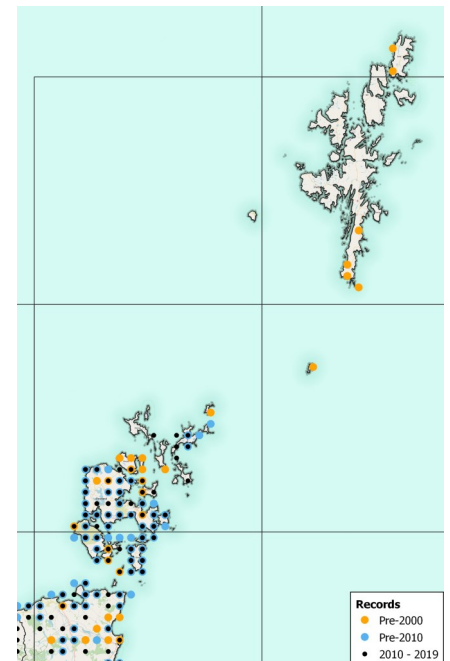
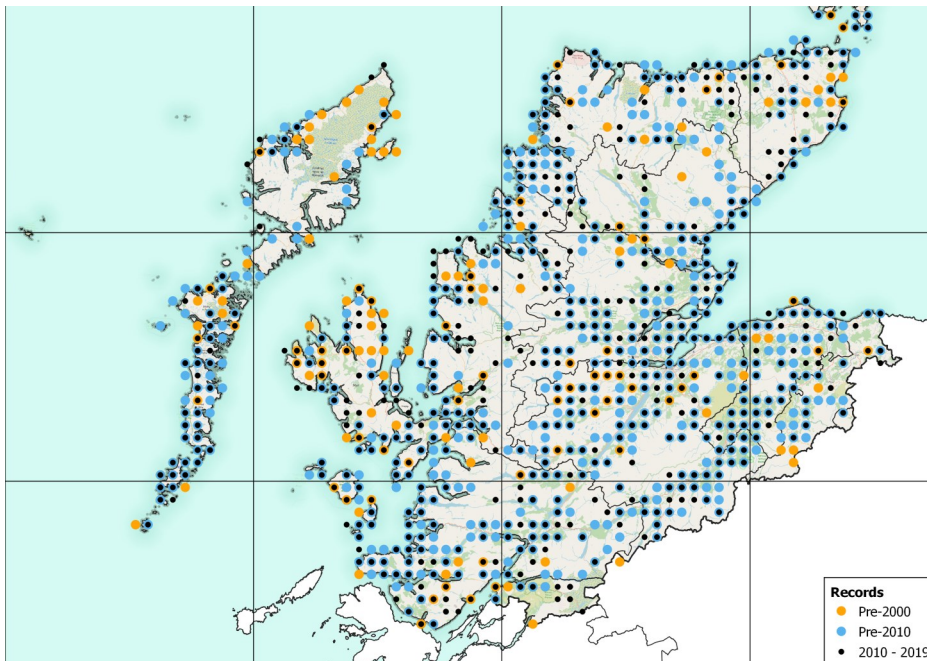
Larval food plant. Bird's-foot Trefoil *Lotus corniculatus*.

Appearance and behaviour. A bright metallic sky-blue coloration denotes the male of this species, whilst the female is a darker, brown-suffused violet blue, with a series of orange lunules towards the edge of each wing (see photo, bottom left). Outside its activity period in the day, it may be found roosting in small numbers together on grass-stems or shrubs.

The shining white egg is easily found on Bird's-foot Trefoil leaves in summer.



Male - Catriona Matheson



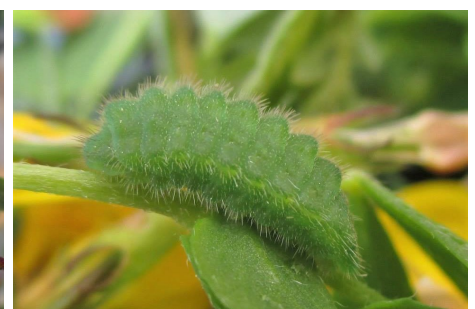
Number of Records	
Pre-2000	2027
2000 - 2009	2994
2010 - 2019	3306



Female - Nigel Richards



Hilary Swift



Nigel Richards